

S. & A. PRISMATIC PRECISION BINOCULARS

FIELD GLASSES, MICROSCOPES, BAROMETERS

HENSOLDT RIFLE TELESCOPES, TELESCOPES

READERS, COMPASSES and MAGNIFIERS

— Nationally Advertised — Nationally Known —



MB



HENSOLDT RIFLE TELESCOPES

WORLD FAMOUS GAME SIGHTS



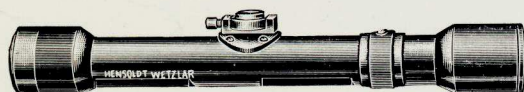
ZIELKLEIN 2 3/4 POWER



ZIELYT 2 3/4 POWER



ZIELVIER 4 POWER



DIALYTAN 4 POWER

DURAL-DIALYTAN 4 POWER

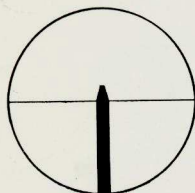
(Featherweight)

Hensoldt Rifle Telescopes are internationally recognized to be the finest precision sighting scopes obtainable. Endorsed by expert hunters and leading gunsmiths.

Note—All Rifle Telescopes can be obtained with the new Hensoldt internal windage adjustment at \$9.00 extra. Windage furnished only with new scopes.

Telescopes illustrated above with standard reticules No. 5 or No. 4 Cross Hair.

We recommend the modified picket post No. 5 for all uses subtends 3" at 100 yards.



NOTE:

81% light power in the Dialytan and the Dural Dialytan.

Model & Code Word	Power	Objective Aperture mm.	Relative Brightness	At 100 yds. Covering yds.	Eye Relief Inches	Length mm.	Diameter Center Tube mm.	Weight Approx. ozs.
Zielklein	2 3/4	18	45	11	3-5	218	22	8
Zielyt	2 3/4	18	50	15	3 1/2	218	22	10
Zielvier	4	27	43	10	3 1/2	240	22	12
Dialytan	4	36	81	12	3 1/2	280	26.5	15
Dural-Dialytan (Featherweight)	4	36	81	12	3 1/2	280	27.5	11

WRITE FOR FURTHER DETAILS
FOR RETAIL PRICES SEE BACK PAGE

S & A ALPINE

(16 x 42 m.m.)

Prismatic Binocular (not illustrated) is the same Quality and fine optics as the S & A line of Prismatic Binoculars as shown on opposite page. For Retail Prices see back page.

S & A PRECISION BINOCULARS

S & A DE LUXE OCEANIC

(7 x 50)

Large Achromatic Oculars
Featherweight



The new S & A Oceanic is the refined result of many years of research work in quality optics and precision workmanship. Yacht owners, sea captains, fire wardens, summer residents will find the new S & A Oceanic 7 x 50 unequalled for its clear and sharp definition, great field and its power to spot objects on dark days, late evening and early morning. Complete with a heavy tan leather case. For retail prices see back page.

S & A DIANA (De Luxe)

8 x 30 Featherweight

(Wide Angle—Large Oculars)

The new S & A Featherweight Achromatic Diana 8 x 30 is the latest development in wide angle lens and precision optics. A real prismatic binocular for general use. Complete with tan leather sports case. For retail prices see back page.

S & A PLANET (De Luxe)

10 x 40 Featherweight

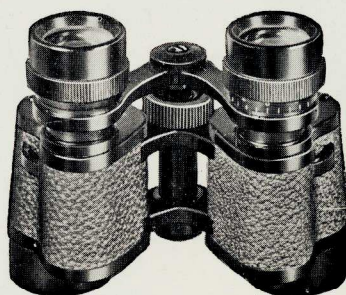
(Large Oculars)

A new precision binocular for those who require more power in viewing stars or picking up objects at a great distance. Complete with tan leather sports case. For retail prices see back page.

S & A NIGHTHAWK

(Achromatic Oculars)

7 Power—24 m.m. objectives



Pocket size—a little gem. A truly Precision instrument. Small and compact, weight only 11 oz. For the traveler, naturalist and bird lover. With universal focal range for near or distant objects. With leather sports case. For retail prices see back page.

S & A ASTOR

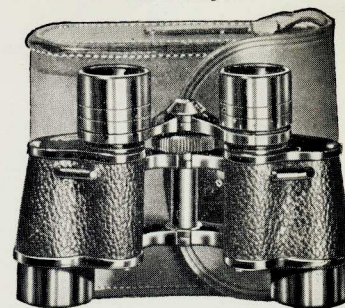
8 x 30 De Luxe

Featherweight
(Large Achromatic Oculars)

S & A NEWPORT

6 x 30 De Luxe

Featherweight
(Large Achromatic Oculars)
Wide Angle

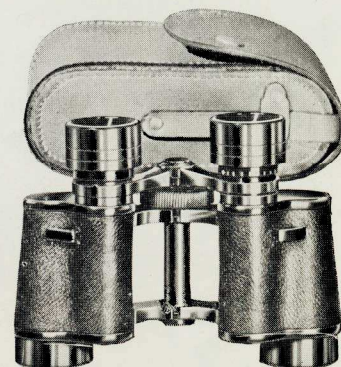


For the traveler and sportsman. Weight only 12 oz. The new S & A Astor De Luxe 8x30 Featherweight and the 6x30 Featherweight Newport are the smallest, lightest and most compact binoculars obtainable. The new S & A 8 x 30 Featherweight Astor meets the demand of small game hunters requiring power for long distance range. For spotting mountain goat, coyotes and other objects at a great distance. The new De Luxe S & A Astor is truly a universal glass for all uses. For retail prices see back page. The new Featherweight S & A De Luxe Newport 6 x 30. With its large field of view and great light is particularly adapted to the naturalist and big game hunter. To the hunter a good glass is as important as his rifle. The new Newport is also adapted for viewing moving objects, horse racing, boat racing, and indoor sports. For ocean travel there is no equal. For retail prices see back page.

AURORE, DUPONT

(Large Oculars)

Power 8 x 25 and 8 x 30



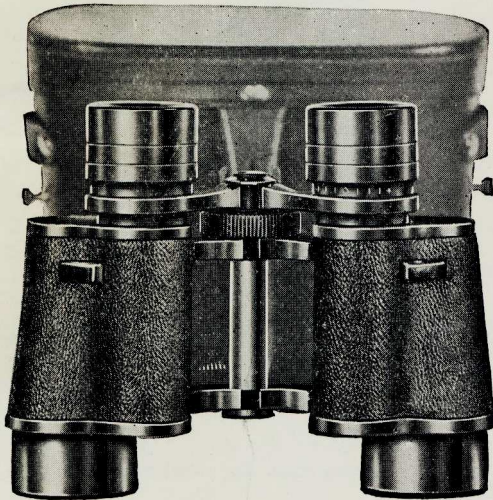
The new 8 x 25 and 8 x 30 Aurore Dupont both with large oculars is the last word in popular priced binoculars. Wide angle, sharp definition, quick focusing, compact and durable. Beautifully finished with grain Morocco leather. With a tan leather sports case. For retail prices see back page.

S & A DE LUXE PRISMATIC BINOCULARS

Superior Quality

S & A Prismatic Binoculars and Achromatic Field Glasses Are Covered With Genuine Morocco Leather

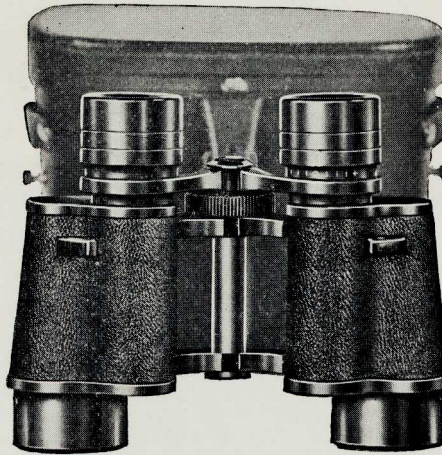
S & A AIRPORT (De Luxe)
(Large Achromatic Oculars)



12 Power 32 m.m. objectives

The new S & A De Luxe Airport although 12 power is smaller and unlike the old large, ungainly type as commonly found in other high power glasses. Truly a great improvement in high power binoculars. The Airport is now a universal glass especially suitable for long and short range observations. The new design and superior quality commands immediate attention. Furnished with a durable high-grade leather case. **For retail prices see back page.**

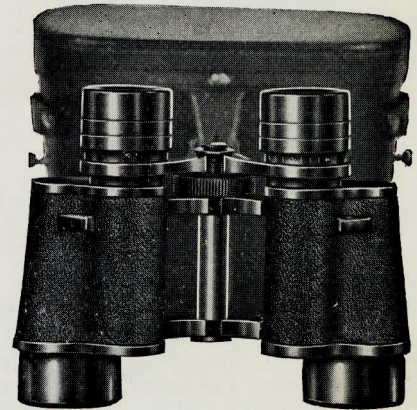
S & A NAVIGATOR (De Luxe)
(Large Achromatic Oculars)



10 Power 32 m.m. objectives

The new S & A De Luxe Navigator 10 power is in every way the same in fine precision optical qualities, design and finish as the new Airport. Slightly smaller, new compact size. A real innovation in binoculars of this power. Adapted to all uses. Furnished with a durable high-grade leather case. **For retail prices see back page.**

S & A REGATTA (De Luxe)
(Large Achromatic Oculars)

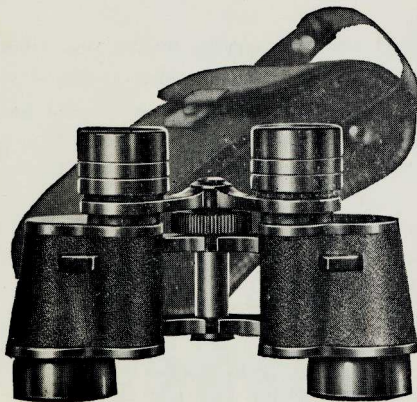


7 Power 35 m.m. objectives

The new 7 power S & A De Luxe Regatta is another forward step in new design and specifications originated by S & A. This new glass was developed to fill a demand for those who desire a glass of great light, power and fine optics, required by yachtsmen, sea captains, game wardens and navy men who are exacting in their requirements for their specific use. The same high standards of skilled workmanship and fine optics that are characteristic only in S & A products. These features are easily apparent to the most inexperienced person. Complete with durable leather case. **For retail prices see back page.**

S & A PRODUCTS CARRY AN UNLIMITED GUARANTEE

S & A ASCOT (De Luxe)
(Large Achromatic Oculars)



8 Power 33 m.m. objectives

The new S & A De Luxe Ascot 8 power with large objectives is a beautiful new binocular, compact bull dog model, with wide angle lens of S & A standard high quality optics. This remarkable new glass attracted immediate attention and most favorable response throughout the country. With a fine tan leather sport case curved to fit the body. **For retail prices see back page.**

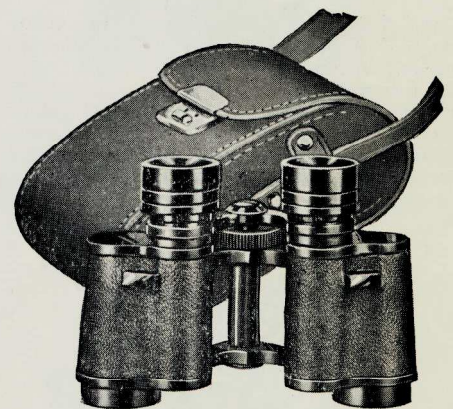
S & A GRAND PRIX (De Luxe)
(Large Achromatic Oculars)



8 x 30 and 6 x 30

The S & A De Luxe Super-Grand Prix 8 or 6 power needs no introduction. It is well known and recognized by leading high-grade dealers for its remarkable value and precision qualities in optics, finish and workmanship. Always improving, never cheapening. Our continuous strides in this direction are easily observed by both dealer and consumer. The Super-Grand Prix is one of the most popular selling binoculars in the S & A line. With a tan saddle leather sport case, curved to fit the body. **For retail prices see back page.**

S & A TROUVILLE (De Luxe)
(Large Achromatic Oculars)

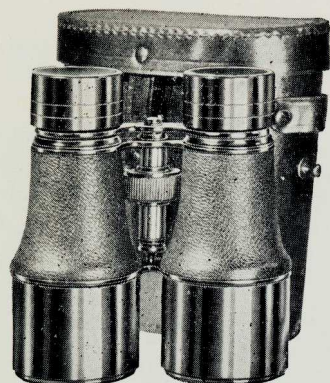


8 Power 26 m.m. objectives

The S & A De Luxe Trouville 8 power is of the same fine quality as the Grand Prix, Ascot, Regatta, Navigator and Airport. A small compact binocular with wide angle lens, great light power and fine definition. A marvelous traveler's glass adapted for all uses. Complete with a tan saddle leather sport case, curved to fit the body. **For retail prices see back page.**

S & A Field Glasses and Binoculars are nationally advertised and nationally known for fine workmanship and precision quality.

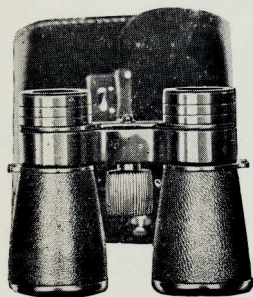
S & A DE LUXE MARINE
(Achromatic)



4½ Power 47 m.m. objectives with sun-shades

The new S & A De Luxe Marine is the last word in fine optics and beautiful workmanship. Adapted to long and short range spotting, horse racing, ships at sea, airplanes, and indoor sports. Truly a universal glass. With a fine leather case. **For retail prices see back page.**

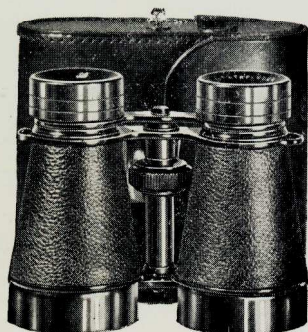
S & A DE LUXE COLLEGIATE
(Achromatic)



Featherweight

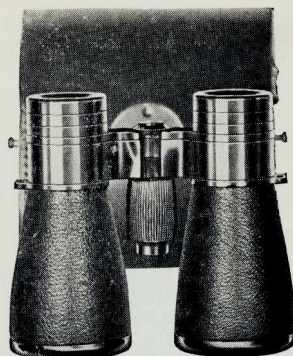
The S & A De Luxe Collegiate is in its entirety an S & A creation in design and precision optics. Weight only 11 ounces—height 3¾"—3½-power, 38 m.m. objective. Deep curved achromatic wide lenses. Large 17 m.m. oculars. Solid frame, barrels covered with black grain Morocco leather. Complete with grain leather sports case. **For retail prices see back page.**

S & A PATHFINDER
(Achromatic)



3 Power, great light, wide field and a clear definition. For nature study, horse racing, indoor sports and night use. With black leather sports case. **For retail prices see back page.**

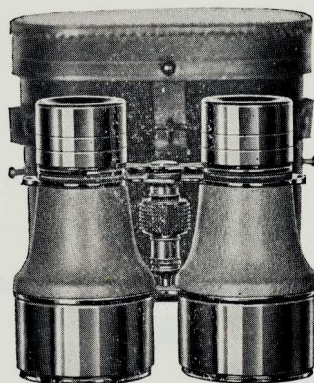
S & A COACH DE LUXE (4x43)
(With interpupillary break)
(Achromatic)



Featherweight

The S & A De Luxe Coach is exactly the same in every detail as the Senior De Luxe, the only difference being in the hinge cross-bar. This additional feature will enable the user to adjust both ocular lenses to the correct interpupillary distance between the optical center of the eyes. With grain leather sports case. **For retail prices see back page.**

S & A NAVY DE LUXE
(Achromatic)



The S & A Navy De Luxe is a new glass recently designed to meet the exacting requirements of navy officers who require a glass of the finest optical qualities, of not more than 4-power. 47 m.m. objectives, telescoping sun-shades, barrels covered with real pig-skin.

For retail prices see back page.

S & A Products Carry an Unlimited Guarantee.

S & A Achromatic Field Glasses and Prismatic Binoculars are Covered with Genuine Morocco Leather.

Note New Design Eye Cups. A New Feature Found Only in the S & A Line.

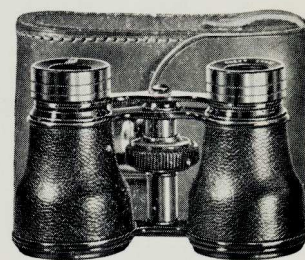
S & A DE LUXE SENIOR
(Achromatic)



Featherweight

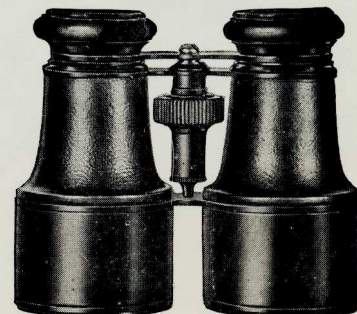
The new S & A Senior De Luxe is exactly the same finish and optics as the new coach, with solid cross-bars. Weight 12 ounces—height 4"—4-power—43 m.m. objective. Particularly adapted to travel and general use. With grain leather sports case. **For retail prices see back page.**

S & A DE LUXE CHEVY CHASE
(Achromatic)



Pocket size. For sports, theatre and nature study. Three different sizes—11 Ligne, 13 Ligne, 15 Ligne. **For retail prices see back page.**

S & A PILOT
(Achromatic)



4 Power 45 m.m. objectives

The S & A Pilot is a new bull-dog model with wide field and great light power. A sturdy glass for hard use. For the hunter, hiker, yachtsman, mountain climber, and sport fan. With case. **For retail prices see back page.**

S & A Prismatic Binoculars and Field Glasses are different from the many stereotype lines on the market. Every glass is of S & A special design, precision workmanship, fine optics and excellent finish.

THE S & A DE LUXE YALE (3x52)

(Bull-dog Model)
(Achromatic)



Compact in design, only 3½" high, 3 power, wide angle objective lens, 2⅞" diameter. Wide field covering a great area at a glance. The great light-power embodied in the new Yale enables one to spot objects easily by night. It has no equal for sports, yachting, horse-racing, bird study. The new Yale is a new creation in high-grade field glasses. Superior quality in every detail and most attractive in design and finish. With cowhide case. **For retail prices see back page.**

S & A SPOTTER

(Prismatic)



(One-half actual size)

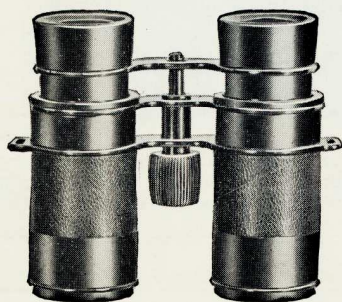
5 Power, Prismatic Monocular made to military specifications. A convenient one hand spotter.

S & A Grand Monocular

Without case. 8 x 30 Prismatic with durable leather case. **For retail prices see back page.**

S & A DE LUXE RACING

(Achromatic)



3 Power. Adapted for Horse Racing, Hunting, Traveling and Nature Study. It fits the pocket. With black leather sport case. **For retail prices see back page.**

S & A SKIPPER

(Achromatic)



6 Power 56 m.m. objectives

The S & A Skipper is a real marine glass adapted for universal use. Recommended by Sea Captains, Fire Wardens, Lighthouse keepers and Harbor Police. With black leather case. **For retail prices see back page.**

S & A GRAY ARMY .08

(Achromatic)



Ask the man who served in France

Gray Army Field Glass with dust cap. Designed to meet Army Requirements. **Interpupillary break. Individual eye adjustment. Dust proof and water proof. A REAL powerful glass for hard usage. Without case. For retail prices see back page.**

S & A DE LUXE STADIUM

(Achromatic)



Pocket Size

3 Power, wide field, great light with interpupillary adjustment. A precision sport glass, adapted for bird study and sports. Endorsed by the Audubon Society and many naturalists and scientists for its clear definition and true reproduction of color. With tan leather sport case. **For retail prices see back page.**

S & A DERBY (De Luxe)

(Achromatic)

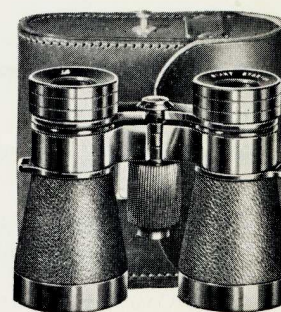


4 Power 54 m.m. objectives

The S & A De Luxe Derby is a wide angle glass with great light power and wide field of view. The new Derby is a compact bull dog model of unusually fine optical qualities. A particularly good marine and race track glass. With durable leather case. **For retail prices see back page.**

S & A DE LUXE GIANT STADIUM

(Achromatic)



3 Power 38 m.m. objectives

With interpupillary break, wide field, light and compact. A larger size of the famous Stadium Glass. With tan leather sport case. **For retail prices see back page.**

S & A OLYMPIC

(Achromatic)



3 Power

A Real Sport Glass, Pocket Size. Sturdy, Compact, quick focusing, wide angle and great brilliancy. With tan leather sport case. **See specification and retail price sheet.**

S & A PRODUCTS CARRY AN UNLIMITED GUARANTEE

FIELD GLASSES, PRICED TO FIT ANY POCKETBOOK

The Bird, Day & Night and Tourist Glasses need no introduction. Nationally known and sold by leading dealers throughout this entire country.

BIRD

(Non-Achromatic)

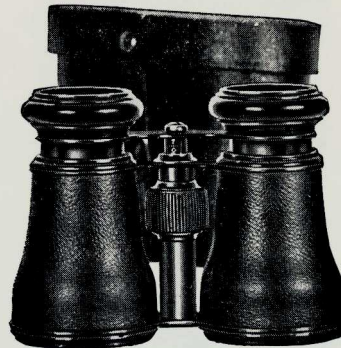


With Magnetic Compass

A popular number at a reasonable price. With black case. For retail prices see back page.

TOURIST

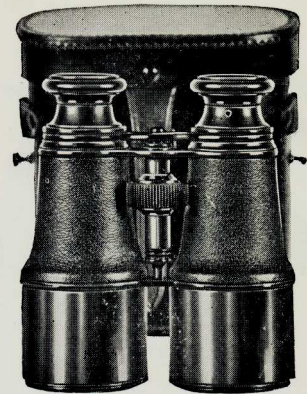
(Non-Achromatic)



The new Tourist was designed to meet the demand for a glass of medium size at a price within the reach of everyone interested in outdoor and indoor sports. With case. For retail prices see back page.

DAY or NIGHT

(Non-Achromatic)



A real full size glass at a reasonable price—a high-grade non-achromatic glass of unusual quality. With case. For retail prices see back page.

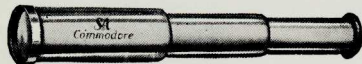
FOR OTHER GLASSES SEE PAGES 2-3-4-5

THE ORIGINAL S & A POCKET BRASS TELESCOPES



Length Open 6 1/8"—Length Closed 3 3/4"

Ranger, 4-Power. For retail prices see back page



Length Open 9 1/8"—Length Closed 4 1/4"

Commodore, 6-Power. For retail prices see back page



Length Open 12 1/4"—Length Closed 5"

Admiral, 8-Power. For retail prices see back page

With each size of telescope, we furnish our dealers with an attractive counter or window display card in colors that shows these telescopes off to great advantage and commands attention.

FOR PRONE SPOTTING

The S & A Bark 25-Power mounted on the S & A FEATHERWEIGHT tripod as illustrated with telescopes is a perfect combination for spotting shots of all calibers. The precision quality of the S & A Bark is unequalled by any telescope on the market.

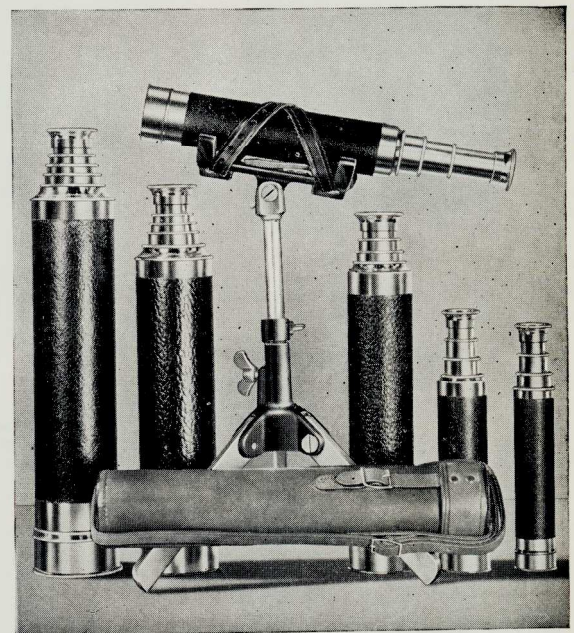
S & A Range Tripod Featherweight with Leather Bag

For Retail Prices see Back Page

S & A HIGH POWER TELESCOPES

(Achromatic)

Nationally known and nationally used by experts who require telescopes of fine quality and sharp definition. Chrome-plated Tubes



Fitted with ocular dust proof shutter—also objective dust cap. S & A Achromatic telescopes are covered with genuine leather. Complete with fiber carrying cases. Solid leather cases with shoulder strap extra.

	Power		Draw	Opened	Closed	Weight	
	Ligne						
Super-Target	35 x 25	4	37"	10 1/2"	38 oz.		
Target	30 x 22	4	36 1/2"	10 1/4"	33 oz.		
Bark	25 x 19	3	29"	9 1/2"	21 oz.		
Brig	20 x 16	3	23 1/2"	8 1/2"	14 oz.		
Schooner	18 x 14	3	17"	6 1/4"	10 oz.		
Sloop	12 x 11	3	16 1/2"	6"	8 oz.		

See
Retail
Price
Sheet



S & A PRISMATIC BINOCULARS AND FIELD GLASSES

Specifications and Retail Prices

PRICES SUBJECT TO CHANGE WITHOUT NOTICE

PAGE No.	Model Code Name	Magnification (Power)	Diameter of Objective m.m.	Relative Brightness	Diameter of Field of view at 1000 Yds. Distance	Height Inches	Weight About Ozs.	RETAIL PRICE
PRISMATIC	2 Aurore	8 x	25	9	125	4¼	16	\$22.50
	2 Aurore	8 x	30	9	135	4¼	17	27.50
	3 Trouville	8 x	26	9	130	4¼	16	28.00
	3 Grand Prix	6 x	30	18	145	4	20	33.50
	3 Grand Prix	8 x	30	14	140	4	20	33.50
	3 Ascot	8 x	33	15	147	4	21	37.50
	2 Nighthawk	7 x	24	12	135	3	11	41.50
	3 Navigator	10 x	32	9	110	4¾	22	41.50
	3 Regatta	7 x	35	15	145	4¾	22	45.00
	3 Airport	12 x	32	7	100	4¾	23	45.00
	2 Newport	6 x	30	21	164	4	12	54.00
	2 Astor	8 x	30	18	158	4	12	56.00
	2 Alpine	16 x	42	7	80	7½	26	58.00
	2 Planet	10 x	40	16	120	5½	20	70.00
	2 Diana	8 x	30	14	164	4¼	16	72.00
	2 Oceanic	7 x	50	51	132	6¾	30	98.00
	5 Spotter Monocular	5 x	19	14½	130	2¼	4½	8.50
	5 Grand Monocular	8 x	30	14	140	4	10	19.50
FIELD GLASSES	6 Tourist	3 x	40	64	80	3	12	5.00
	6 Bird	3 x	45	64	80	4	17	7.00
	6 Day & Night	3 x	45	74	80	5	15	8.00
	4 Chevy Chase... 11 L.	2¼ x	25	70	140	2	5	9.50
	4 Chevy Chase... 13 L.	2½ x	29	75	125	2¼	6	10.00
	4 Chevy Chase... 15 L.	3 x	34	80	115	2½	7	10.50
	4 Pilot	4 x	45	70	140	4	16	12.00
	4 Pathfinder	3 x	43	75	130	3¾	12	12.50
	5 Olympic	3 x	34	100	200	2	6	13.50
	5 Racing	3 x	34	80	140	3¼	9	13.50
	4 Collegiate	3½ x	38	70	125	3¾	11	13.50
	5 Stadium	3 x	30	130	165	2	7	15.00
	4 Senior	4 x	43	90	125	4	12	15.00
	4 Marine	4½ x	47	80	90	5¼	15	15.00
	5 Giant Stadium	3 x	38	100	130	3½	11	16.00
	5 Gray Army	08 x	40	25	45	4¼	16	16.00
	Leather Case for Gray							2.50
	4 Coach	4 x	43	90	125	4	13	17.50
	5 Yale	3 x	52	100	220	3½	20	18.50
	5 Derby	4 x	54	80	140	4½	16	19.50
	4 Navy	4 x	47	90	125	4	16	20.00
	5 Skipper	6 x	56	100	75	6	18	25.00

For Other Retail Prices See Back of This Page

RETAIL PRICES

For Retail Prices on Binoculars and Field Glasses see other side of this page.

ALTIMETERS

Pg. 10—Single Face 8,000 ft.	10.00
Pg. 10—Single Face 12,000 ft.	10.00
Pg. 10—Single Face 16,000 ft.	10.00
Pg. 10—Auto Dashboard Fixture	1.50
Pg. 10—Double Face Altimeter 12,000 ft.	17.50
Pg. 10—Double Face Altimeter 16,000 ft.	17.50

BAROMETERS

Pg. 9—Clipper Ship with Ant. Stand	2.50
Pg. 9—Clipper Ship with Brass Sconce	2.50
Pg. 8—Weatherman—Walnut & Gold	3.95
Pg. 8—Weatherman—Black & Gold	3.95
Pg. 8—Weatherman—Chrome & Black	4.50
Pg. 8—Pilot Ship Wheel	5.00
Pg. 8—Small Pend	5.00
Pg. 9—Barometer Single Ship Wheel	7.50
Pg. 8—Twin—Bronze Bar. & Thermo.	9.00
Pg. 8—Twin—Chrome Bar. & Thermo.	10.50
Pg. 8—Three Unit Ship Wheel—Bronze	10.50
Pg. 8—Three Unit Ship Wheel—Chrome	12.00
Pg. 9—Empire Bar.—Thermo.—Hygrometer	15.00
Pg. 14—Nautical	15.00
Pg. 14—Bulkhead Fixture for above	2.50
Pg. 9—Clock Single Ship Wheel	22.50
Pg. 8—Clock Combination Ship Wheel	30.00

COMPASSES

Pg. 13—Gun Metal	.50
Pg. 13—Forester	.70
Pg. 13—Gem	1.00
Pg. 13—Hunter	1.20
Pg. 13—Explorer	2.00
Pg. 13—Yachtsman	2.25
Pg. 13—Appalachian	3.75
Pg. 13—Sighting	6.00

LINEN TESTERS

Pg. 11—Brass 1/4" x 1/4" Standard	.50
Pg. 11—Brass 1/2" x 1/2" Standard	.70
Pg. 11—Brass 3/4" x 3/4" Standard	1.00
Pg. 11—Brass 1" x 1" Standard	1.50
Pg. 11—Nickel 1/4" x 1/4" Standard	.60
Pg. 11—Nickel 1/2" x 1/2" Standard	.90
Pg. 11—Nickel 3/4" x 3/4" Standard	1.25
Pg. 11—Nickel 1" x 1" Standard	2.20
Pg. 11—Brass 1/4" x 1/4" Aplanatic	.70
Pg. 11—Brass 1/2" x 1/2" Aplanatic	.90
Pg. 11—Brass 3/4" x 3/4" Aplanatic	1.25
Pg. 11—Brass 1" x 1" Aplanatic	2.00
Pg. 11—Nickel 1/4" x 1/4" Aplanatic	.80
Pg. 11—Nickel 1/2" x 1/2" Aplanatic	1.00
Pg. 11—Nickel 3/4" x 3/4" Aplanatic	1.50
Pg. 11—Nickel 1" x 1" Aplanatic	2.50

FIREFLYS

Pg. 12—Radiant Firefly	2.75
Pg. 12—Straight Handle Firefly 2"	2.75
Pg. 12—Straight Handle Firefly 2 1/2"	2.85
Pg. 12—Straight Handle Firefly 3"	3.00
Pg. 12—Straight Handle Firefly 3 1/2"	3.30
Pg. 12—1/2" x 1/2" Linen Tester Firefly	4.50
Pg. 12—1" x 1" Linen Tester Firefly	5.25
Pg. 12—Loupe 22 Diopter Firefly	6.50

MAGNIFIERS

Pg. 11—Pocket Magnifiers (one dozen to a card)	.25
Pg. 10—Single Lens 1 inch Folding Black Pocket Magnifier	.50
Pg. 10—Double Lens 1 inch Folding Black Pocket Magnifier	.70
Pg. 10—Folding Pocket Magnifier 45 m.m.	.60
Pg. 11—Folding Reading Glass 50 m.m. (Wire Hdle.)	.75
Pg. 11—Tripod Magnifier 33 m.m.	.75

Pg. 10—Trapeze Magnifier 50 m.m.	1.30
Pg. 10—Trapeze Magnifier 60 m.m.	1.50
Pg. 11—Magnifier or Loupe 22 Diopter	4.50

READING GLASSES

Pg. 11—Reader Straight Handle 2"	.70
Pg. 11—Reader Straight Handle 2 1/2"	.80
Pg. 11—Reader Straight Handle 3"	1.00
Pg. 11—Reader Straight Handle 3 1/2"	1.30
Pg. 11—Reader Straight Handle 4"	1.60
Pg. 11—Reader Straight Handle 4 1/2"	2.00
Pg. 11—Reader Straight Handle 5"	2.30
Pg. 11—Precision Readers, Trolith Handle 2 1/2"	1.40
Pg. 11—Precision Readers, Trolith Handle 3"	1.65
Pg. 11—Precision Readers, Trolith Handle 3 1/2"	2.00
Pg. 11—Precision Readers, Trolith Handle 4"	2.50
Pg. 11—Rectangular Reader 81 x 44	3.50
Pg. 11—Rectangular Reader 96 x 46	4.00

MICROSCOPES

Pg. 7—Gigant 25x	1.25
Pg. 7—Tilt Stand for Giant	3.50
Pg. 7—Giant, Jr. 20-30-40x	4.50
Pg. 7—Giant 40-50-60x	5.00
Pg. 7—Super Giant 80-100-120x	6.00
Pg. 7—Micrometer Stand with Loupe	7.50
Pg. 7—High School	7.75
Pg. 7—Tutor	9.00
Pg. 7—Junior	12.50
Pg. 7—Student	21.50

PEDOMETER

Pg. 13—Hike Pedometer	2.75
-----------------------	------

REDUCING GLASSES

Pg. 11—Reducing Glass with Handle 2"	1.00
Pg. 11—Reducing Glass with Handle 2 1/2"	1.20
Pg. 11—Reducing Glass with Handle 3"	1.50

RIFLE TELESCOPES (HENSOLDT)

Pg. 2—Zielklein 2 3/4x	36.00
Pg. 2—Zielyt 2 3/4x	45.00
Pg. 2—Zielvier 4x	54.00
Pg. 2—Dialytan 4x	75.00
Pg. 2—Dural Dialytan Featherweight	88.00
Pg. 2—Above Scopes with Internal Windage Adjustment, Extra	9.00

TELESCOPES & TRIPOD

Pg. 6—Ranger 4x	1.00	Leather Cases for Achromatic Telescopes, Extra
Pg. 6—Commodore 6x	2.00	
Pg. 6—Admiral 8x	3.00	
Pg. 6—Sloop 12x	6.50	1.90
Pg. 6—Schooner 18x	8.50	2.00
Pg. 6—Brig 20x	11.00	2.50
Pg. 6—Bark 25x	16.00	3.00
Pg. 6—Target 30x	25.00	3.25
Pg. 6—Super Target 35x	36.00	3.50
Pg. 6—Range Tripod with Case		7.50

THERMOMETERS and HYGROMETERS

Pg. 14—Sport Thermometer	1.00
Pg. 14—Outdoor Thermometer	1.75
Pg. 9—Biometer	2.75

WATCHMAKERS' LOUPES

Pg. 11—Aluminum Frame 2" Focus	.50
Pg. 11—Aluminum Frame 3" Focus	.40
Pg. 11—Spiral Eye Loupe 2" Focus	.60
Pg. 11—Spiral Eye Loupe 3" Focus	.50
Pg. 11—Hard Rubber Frame 2" Focus	.75
Pg. 11—Hard Rubber Frame 3" Focus	.60

ORDER BY TRADE NAME

All Merchandise will be shipped F. O. B. Boston by the fastest and most economical carriers. Prices subject to change without notice.

For Retail Prices on Binoculars and Field Glasses see other side of this page.

SWIFT & ANDERSON, INC.

111 SUMMER STREET

Manufacturers and Distributors

BOSTON, MASS.

WHEN A NEW PRICE LIST IS SENT YOU — CUT OFF OLD ONE ON THIS LINE AND PASTE NEW LIST ON THIS STRIP